



THE SCOOP

**Shares
inc.**

Quarterly Newsletter
JULY 2025

DEAR SHARES, INC. FAMILY:

HELLO! THE PAST FEW MONTHS HAVE BROUGHT ABOUT MANY CHANGES HERE AT SHARES, WITH EVEN MORE TO COME. BUT WHAT HAS NOT CHANGED IS OUR MISSION, "WE PROVIDE SERVICE AND SUPPORT FOR PEOPLE WITH DISABILITIES TO ENHANCE THEIR SUCCESSFUL INCLUSION IN THE COMMUNITY."

WE HAVE RECENTLY ADDED A VISION STATEMENT THAT BUILDS ON THAT MISSION, AND I AM EXCITED TO SHARE IT WITH YOU: "SHARES, INC. ENVISIONS A COMMUNITY IN WHICH PEOPLE WITH DISABILITIES ARE VALUED, FULLY INCLUDED, AND EMPOWERED TO LEAD MEANINGFUL, SELF-DETERMINED LIVES." PRETTY POWERFUL, RIGHT? FINALLY, AS AN ORGANIZATION, WE EMBRACE THE FOLLOWING VALUES WHICH DRIVE EVERY DECISION WE MAKE:

·INCLUSION: WE ARE COMMITTED TO CREATING OPPORTUNITY AND FOSTERING A SENSE OF BELONGING FOR EVERYONE IN THE SHARES COMMUNITY. WE LISTEN TO EVERY VOICE. WE BREAK DOWN BARRIERS AND ENSURE THAT EACH PERSON FEELS WELCOMED, VALUED, AND EMPOWERED. WE BELIEVE IN THE RIGHT OF EVERY INDIVIDUAL TO MAKE INFORMED CHOICES AND DIRECT THEIR OWN LIVES. WE CELEBRATE AND RESPECT THE UNIQUE PERSPECTIVES, BACKGROUNDS, AND EXPERIENCES THAT EACH PERSON BRINGS.

·EXCELLENCE: WE GIVE OUR BEST EVERY DAY. WE PROVIDE QUALITY SERVICES. WE ARE GROUNDED IN WHAT WORKS WELL, BUT WE ALSO CHALLENGE THE STATUS QUO WITH COURAGE, CURIOSITY, AND INNOVATION. WE ARE NOT AFRAID TO ASK QUESTIONS AND TRY NEW IDEAS.

·INTEGRITY: WE DO THE RIGHT THING EVEN WHEN NO ONE IS LOOKING. WE ARE PROFESSIONAL, HONEST, DEPENDABLE, AND RESPECTFUL IN WHAT WE DO AND SAY.

·COMPASSION: WE HONOR THE INHERENT WORTH OF EVERY PERSON. WE TREAT ONE ANOTHER WITH DIGNITY, KINDNESS, FAIRNESS, AND EMPATHY. WE GENUINELY CARE ABOUT THE WELLBEING OF OTHERS AND ENSURE EVERYONE IN THE SHARES COMMUNITY FEELS RESPECTED AND SUPPORTED.

SHARES LEADERSHIP HAS BEEN WORKING AS A TEAM TO CREATE ACTION STEPS AS WE DIG INTO OUR NEW STRATEGIC PLAN. I WANT TO SHARE TWO EXCITING CHANGES THAT ARE IN THE WORKS:

1. WE ARE GIVING THE SHARES BRAND A BIT OF A "GLOW-UP" WITH A FRESH LOGO AND AN UPDATED WEBSITE THAT WILL BETTER REFLECT WHO WE ARE. CAN'T WAIT TO SHARE SOON!

2. WE ARE PUTTING MORE FOCUS ON FUNDRAISING, INCLUDING DONATIONS, GIVING CAMPAIGNS, EVENTS, AND GRANT FUNDING. THE GOOD NEWS IS THAT SHARES IS IN A SOLID PLACE FINANCIALLY – WE ARE WORKING TO MAKE SURE WE STAY THAT WAY FOR A LONG TIME TO COME!

STAY TUNED FOR MORE DETAILS SOON! MEANWHILE, PLEASE FEEL FREE TO REACH OUT IF YOU HAVE ANY QUESTIONS. THANK YOU FOR ALL YOU DO TO SUPPORT THE MISSION, VISION, AND VALUES OF SHARES!

RYAN BETHEL, EXECUTIVE DIRECTOR

In this issue:

PAGE 1
VISION AND CORE VALUES

PAGE 2
APSE CONFERENCES

PAGE 3
SE+ STORY

PAGE 4
SAYING GOODBYE

PAGE 5
RUSHVILLE COMMUNITY CENTER

PAGE 6
LIVING SKILLS

PAGE 7
PREVOCATION UPDATE AND
GIFT

PAGE 8-9
TRIP INFORMATION

PAGE 10-11
MEET NEW STAFF

PAGE 12
SAVE THE DATES

Published by Shares, Inc. Corporate Office
(317) 398-8218 · (877) 398-8218 toll free ·
www.sharesinc.org

Committee: Dwana Back-Lamberson,
Kimberly Lindgren-Wilson, Kelly Slaven,
Brynne Snyder, & Jordan Turner

NONDISCRIMINATION ON BASIS OF HANDICAP

Shares, Inc. is committed to a policy of nondiscrimination as required by civil rights legislation, Section 504 of the Rehabilitation Act of 1990 as a result of the organization's commitment to equal opportunity. EOE-M/F Shares, Inc. is an Equal Opportunity Employer.

INDIANA APSE CONFERENCE

JOE LAND, DIRECTOR OF COMMUNITY AND DAY SERVICES, RECEIVED THE REBECCA MCDONALD AWARD. THIS AWARD IS PRESENTED TO SOMEONE WHO DEMONSTRATES EXCEPTIONAL LEADERSHIP, VOLUNTEERISM, AND COMMITMENT TO THE MISSION AND VISION OF APSE. CONGRATULATIONS, JOE!



APRIL WAS THE INDIANA STATE APSE CONFERENCE. THE TWO-DAY CONFERENCE WAS FILLED WITH INFORMATIONAL BREAKOUT SESSIONS TO CHOOSE FROM. SOME OF THE SESSIONS THAT STAFF ATTENDED WERE: TIME MANAGEMENT, ADHD, NEURODIVERSITY/QUEER IDENTITIES, EFFECTIVE COMMUNICATION, AI TOOLS FOR INDIVIDUALS WITH DISABILITIES, AND SHELTERED TO COMPETITIVE RESEARCH TO NAME A FEW. A LOT WAS LEARNED THAT WE CAN APPLY TO SHARES.

NATIONAL APSE CONFERENCE

THE 2025 NATIONAL APSE CONFERENCE, THEMED "EMPLOYMENT FIRST, EMPLOYMENT FOR ALL", TOOK PLACE IN JUNE IN WASHINGTON, D.C. THIS PREMIER EVENT, ORGANIZED BY THE ASSOCIATION OF PEOPLE SUPPORTING EMPLOYMENT FIRST (APSE), FOCUSED ON ADVANCING INCLUSIVE EMPLOYMENT PRACTICES FOR INDIVIDUALS WITH DISABILITIES. SIX INDIVIDUALS FROM SHARES, INC. ATTENDED BREAKOUT SESSIONS AND BUILT COMRADERY WITHIN OUR TEAM AND WITH OTHERS IN THE FIELD.



THE BREAKOUT SESSIONS COVERED A VARIETY OF VALUABLE TOPICS THAT WE CAN TAKE BACK AND APPLY TO ENHANCE THE QUALITY OF SERVICES WE PROVIDE TO THE INDIVIDUALS WE SUPPORT.

- FROM 14(C) TO \$14 PER HOUR
- STRATEGIES TO SUPPORT STAFF WELLNESS AND RETENTION
- ETHICAL IMPORTANCE OF PSYCHOLOGICAL SAFETY IN THE WORKPLACE
- SUPPORTING INDIVIDUALS WITH INTELLECTUAL DISABILITIES, AUTISM, AND MENTAL HEALTH NEEDS IN COMPETITIVE INTEGRATED EMPLOYMENT
- CREATING A CLEAR PATHWAY TO COMPETITIVE INTEGRATED EMPLOYMENT (CIE) FOR EVERYONE





THE SUPPORTED EMPLOYMENT PLUS (SE+) PROGRAM IS DESIGNED TO HELP INDIVIDUALS WITH DISABILITIES TRANSITION FROM SHELTERED WORK INTO COMPETITIVE, INTEGRATED EMPLOYMENT. KIM KUHNS IS A SHINING EXAMPLE OF HOW THIS PROGRAM CAN EMPOWER PEOPLE TO PURSUE MEANINGFUL CAREERS.

KIM HAS BEEN A DEDICATED EMPLOYEE AT SHARES FOR 9 YEARS. IN LATE 2024, SHE MADE THE EXCITING DECISION TO JOIN THE SE+ PROGRAM WITH A CLEAR GOAL IN MIND: TO WORK IN A DAYCARE SETTING. WITH GUIDANCE FROM HER JOB COACH, KIM BEGAN EXPLORING OPPORTUNITIES IN EARLY CHILDHOOD EDUCATION.

EAGER TO LEARN, KIM SHADOWED STAFF AT TWO DIFFERENT DAYCARE CENTERS. THIS HANDS-ON EXPERIENCE HELPED HER UNDERSTAND THE DAY-TO-DAY RESPONSIBILITIES OF DAYCARE WORKERS AND GAVE HER INSIGHT INTO WHERE SHE COULD THRIVE. KIM WAS THOUGHTFUL ABOUT HOW HER STRENGTHS ALIGNED WITH THE NEEDS OF A CHILDCARE ENVIRONMENT.

KIM THEN PARTICIPATED IN A JOB ASSESSMENT AT CELEBRATIONS DAYCARE, WORKING CLOSELY WITH THE TEACHING STAFF IN THE 2- TO 3-YEAR-OLD CLASSROOM. IT QUICKLY BECAME CLEAR THAT SHE HAD A NATURAL CONNECTION WITH THIS AGE GROUP. SHE EMBRACED EVERY PART OF THE JOB—FROM DIAPER CHANGES TO PLAYTIME TO CLEANING UP—DEMONSTRATING BOTH A WILLINGNESS TO LEARN AND A DEEP RESPECT FOR THE WORK.

KIM'S ENTHUSIASM AND RELIABILITY DID NOT GO UNNOTICED. THE LEAD TEACHER, IMPRESSED WITH HER PERFORMANCE AND ATTITUDE, RECOMMENDED HER FOR AN ASSISTANT TEACHER POSITION. FOR THE PAST FOUR MONTHS, KIM HAS EXCELLED IN THIS ROLE. SHE BRINGS ENERGY AND POSITIVITY TO HER WORK EVERY DAY, AND HER COWORKERS APPRECIATE HER EAGERNESS TO CONTRIBUTE AND HER WARM PRESENCE WITH THE CHILDREN.

INSPIRED BY HER EXPERIENCE, KIM IS NOW EXPLORING THE POSSIBILITY OF RETURNING TO COLLEGE TO STUDY EARLY CHILDHOOD DEVELOPMENT. HER ULTIMATE GOAL? TO BECOME A LEAD TEACHER AND CONTINUE MAKING A DIFFERENCE IN THE LIVES OF YOUNG CHILDREN.

KIM'S STORY IS A POWERFUL REMINDER OF THE POTENTIAL WITHIN EVERY INDIVIDUAL WHEN GIVEN THE RIGHT SUPPORT AND OPPORTUNITY. THROUGH SE+, SHE FOUND NOT JUST A JOB—BUT A CALLING.

CELEBRATING PENNINA'S RETIREMENT

AFTER TWO DECADES OF DEDICATED SERVICE AT SHARES, INC., WE BID A FOND AND HEARTFELT FAREWELL TO PENNINA MCMULLEN, AS SHE BEGINS A NEW CHAPTER IN HER LIFE.

SHE STARTED HER CAREER WITH SHARES IN APRIL 2005 IN GREENFIELD AS A LIVING SKILLS INSTRUCTOR, THEN LATER BECAME A LEAD INSTRUCTOR IN THE DAY PROGRAM. BESIDES COORDINATING LIVING SKILLS CLASSES AND LEARNING ACTIVITIES, SHE ESPECIALLY ENJOYED THE OUTINGS - HER FAVORITE PART OF THE JOB.

HER MOST MEMORABLE OUTING WAS ACCOMPANYING PARTICIPANTS TO THE SHRINERS' CIRCUS AT THE STATE FAIRGROUNDS. OTHER FAVORITE OUTINGS INCLUDED THE STATE FAIR, CHRISTMAS TREE EXHIBITS AT THE INDIANA HISTORICAL MUSEUM, NEWFIELDS ART GALLERIES AND GARDENS, LOCAL PARKS, AND RESTAURANTS.

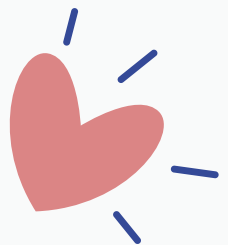
HER KINDNESS, PATIENCE, AND THOUGHTFULNESS HAVE GIVEN PARTICIPANTS POSITIVE AND MEANINGFUL EXPERIENCES, WITH A DEEP AND LASTING IMPACT ON THEIR LIVES, AND THOSE OF THEIR FAMILIES. THE TWENTY YEARS OF SERVICE AND CARE SHE'S GIVEN TO EACH PARTICIPANT HAS BEEN INVALUABLE AND VERY MUCH APPRECIATED. WE CONGRATULATE PENNINA ON HER WELL-DESERVED RETIREMENT AND WISH HER ALL THE BEST!



"WHETHER HELPING FOLKS WITH CRAFTS OR SHARING MY GRANDCHILD WITH A PARTICIPANT, THE SMILES ON OTHERS' FACES WAS THE BEST PART OF THIS ADVENTURE."

-PENNINA

Thank
You



PENNINA WAS MY MENTOR WHO GUIDED AND SUPPORTED ME AT WORK AND IN MY HOME LIFE. SHE WAS FULL OF KNOWLEDGE AND HELPED EVERYONE SHE CAME IN CONTACT WITH REACH THEIR GOALS.

-PAULA, LIVING SKILLS INSTRUCTOR



A PLACE OF PURPOSE: SPOTLIGHT ON THE RUSHVILLE COMMUNITY CENTER

CAN YOU THINK OF A BETTER NAME THAN THE LOVE CENTER? WE COULDN'T EITHER-BECAUSE EVERYONE WHO VISITS SEEMS TO LOVE IT! THE SPIRIT OF THE NAME LIVES IN THE JOY, CONNECTION, AND COMMUNITY SUPPORT IT HAS BROUGHT TO RUSH COUNTY.

OUR COMMUNITY ENGAGEMENT MEMBERS HAVE BEEN ACTIVELY VOLUNTEERING AT THE CENTER SEVERAL DAYS A WEEK, AND IT HAS QUICKLY BECOME A HIGHLIGHT FOR MANY.

ON TUESDAYS, WE HAVE BEEN ASSISTING THE LOCAL FOOD PANTRY BY PACKING SNACK BAGS FOR SCHOOL KIDS. WE GET TO WORK ON SKILLS FOR FUTURE EMPLOYMENT AND INDEPENDENCE SUCH AS PROPERLY BAGGING GROCERIES, CHECKING EXPIRATION DATES, AND SORTING. THURSDAYS ARE FOR THE “CART CREW,” WHERE WE HELP LOAD GROCERIES INTO PATRONS’ VEHICLES, RETURN CARTS, AND BRING A HEALTHY DOSE OF POSITIVITY TO EVERYONE WE MEET. HUNGRY STOMACHS AND HURRIED MINDS MAY NOT ALWAYS BE IN THE BEST OF MOODS—BUT BY THE TIME WE’RE DONE, WE USUALLY SEE A SMILE!

SKILLS SUCH AS PROVIDING CUSTOMER SERVICE, EFFICIENTLY LOADING GROCERIES, AND FOLLOWING SAFETY PROTOCOLS IN HIGH-TRAFFIC AREAS CAN TRANSLATE WELL INTO ROLES LIKE PERSONAL SHOPPER POSITIONS AT WALMART, OR GROCERY ROLES AT KROGER. FRIDAYS OFFER A WELL-ROUNDED EXPERIENCE: HELPING PREP MEALS FOR THE SENIOR CENTER, TAKING LAPS ON THE TRACK, EXPLORING THE LIBRARY, AND LENDING A HAND WITH LIGHT CLEANING. THESE TASKS NOT ONLY SUPPORT THE COMMUNITY, BUT THEY ALSO HELP OUR PARTICIPANTS BOOST INDEPENDENCE, CONFIDENCE, AND SPARK INTEREST IN POTENTIAL CAREER PATHS.

SOME OF OUR TEAM MEMBERS SHARED THEIR FAVORITE PARTS: BRAD AND BEN ENJOY THE LIBRARY—BRAD ESPECIALLY LOVES FLIPPING THROUGH ROCK-AND-ROLL BOOKS AND DREAMS OF WORKING IN A MUSIC OR RECORD STORE ONE DAY. EMMALEE FINDS PURPOSE IN HELPING AT THE FOOD PANTRY, WHERE SHE SHARPENS HER RETAIL SKILLS LIKE SORTING, LABELING, AND STOCKING.

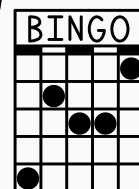
WE ARE SO GRATEFUL TO HAVE SUCH A VIBRANT, WELCOMING PLACE AT THE HEART OF OUR COMMUNITY AND FOR THE HARD WORK OUR COMMUNITY ENGAGEMENT DEPARTMENT PUTS IN EACH WEEK. WHETHER YOU CALL IT THE LOVE CENTER OR THE COMMUNITY CENTER, IT IS A PLACE EVERYONE CAN FEEL AT HOME.



LIVING SKILLS: WHERE LEARNING MEETS ADVENTURE



SWEET TREATS, BINGO, AND ADVENTURES ARE JUST A FEW OF THE FUN THINGS GREENFIELD LIVING SKILLS HAS BEEN UP TO—WE STAY BUSY AND ON THE GO! WE CELEBRATED THE PACERS WITH BLUE AND YELLOW CUPCAKES, PLAYED FOURTH OF JULY BINGO, GONE BOWLING, CAUGHT A MOVIE OR TWO, AND REGULARLY ATTEND CHICK-FIL-A BINGO—BE SURE TO SAY HI IF YOU SEE US THERE!



RUSHVILLE SHARES VISITED THE NATIONAL MODEL AVIATION MUSEUM IN MUNCIE, WHERE WE EXPLORED AVIATION HISTORY—FROM MODEL AIRPLANES OVER 100 YEARS OLD TO MODERN DRONES USED TO DELIVER MEDICATION AROUND THE WORLD. WE HAD THE CHANCE TO FLY MODEL AIRPLANES USING COMPUTER SIMULATORS AND EVEN BUILT AND FLEW OUR OWN!



IN CLASS, WE PAINTED KINDNESS ROCKS AND A SIGN, THAT WAS PLACED AT THE CAROL JENKINS-DAVIS COMMUNITY PARK IN RUSHVILLE. PLEASE VISIT THE PARK AND TAKE ONE AND ENCOURAGE SOMEONE.



SHELBYVILLE LIVING SKILLS HAS BEEN WORKING ON BUDGETING IN THE COMMUNITY, LEARNING NEW INFORMATION, AND ENJOYING EACH OTHER'S COMPANY. WE HAVE ALSO BEEN EXPLORING NEW PLACES SUCH AS OLLIE'S IN GREENWOOD, NEW RESTAURANTS, AND NEW PARKS. EVERYONE HAS BEEN HAVING A GOOD TIME TRYING THESE NEW EXPERIENCES!



RUSHVILLE PREVOCATIONAL UPDATE

WE ARE THRILLED TO SHARE TWO EXCITING DEVELOPMENTS HAPPENING AT OUR RUSHVILLE LOCATION!

NEW PARTNERSHIP WITH FLORAL BEVERAGES

OUR LONG-STANDING BUSINESS PARTNER, NATIONAL WINE AND SPIRITS, HAS RECENTLY PHASED OUT THEIR BLOCKS ROCK DIVISION AND IS NOW EXPLORING A NEW AND INNOVATIVE DIRECTION IN THE BEVERAGE INDUSTRY. WE ARE PROUD TO SUPPORT THIS TRANSITION AS THEY PARTNER WITH FLORAL BEVERAGES.

AS PART OF THIS VENTURE, SHARES WILL SERVE AS A DISTRIBUTION AND FULFILLMENT CENTER. OUR RESPONSIBILITIES WILL INCLUDE RECEIVING BULK SHIPMENTS, VERIFYING CONTENTS, ORGANIZING INVENTORY, AND PREPARING ORDERS FOR DELIVERY TO THE SALES TEAM. IF ALL GOES ACCORDING TO PLAN, WE EXPECT TO BEGIN RECEIVING INVENTORY IN AUGUST 2025.

RENEWED COLLABORATION WITH EMERSON COPELAND

WE ARE ALSO EXCITED TO ANNOUNCE THE RETURN OF A VALUED PARTNERSHIP WITH COPELAND, ONE OF OUR PRIMARY BUSINESS PARTNERS IN RUSHVILLE. FOLLOWING THEIR RECENT ACQUISITION BY BLACKSTONE AND THE RELOCATION OF THEIR DISTRIBUTION CENTER TO TEXAS, WE HAVE RE-ENGAGED TO SUPPORT THEIR OPERATIONS.

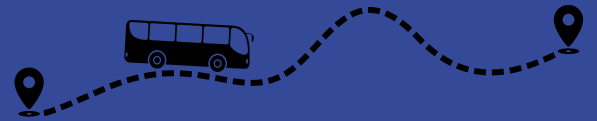
WE ARE CURRENTLY IN THE PROCESS OF RECEIVING KIT COMPONENTS VIA TRUCK AND WILL RESUME PACKAGING OPERATIONS, JUST AS WE HAVE IN THE PAST. WE ANTICIPATE EXPANDING INTO ADDITIONAL KIT TYPES SHORTLY. DEPENDING ON THE TIMING OF THIS NEWSLETTER, WE MAY HAVE ALREADY RECEIVED OUR FIRST SHIPMENT AND EXPECT TO BE FULLY OPERATIONAL THIS MONTH.

RALPH LUX 'S LASTING LEGACY



RALPH LUX WORKED AT SHARES, INC. FOR NEARLY 40 YEARS. HE WAS NOT ONLY A DEDICATED AND HARD WORKER, BUT ALSO A FUN COLLEAGUE AND A FRIEND TO EVERYONE. AFTER RETIRING FROM SHARES INC., RALPH REMAINED AN ACTIVE MEMBER OF THE COMMUNITY UNTIL HIS PASSING IN JANUARY 2025. ON JUNE 2ND, HIS FAMILY DONATED TO SHARES IN HIS MEMORY. SHARES PLANS TO USE THIS GIFT TO ENHANCE THE OUTDOOR SPACE AND WILL ALSO INSTALL A PLAQUE IN RALPH'S NAME.





IMPORTANT DATES:

**AUGUST 1: TRIP PAID IN
FULL AND SPENDING
MONEY DUE**

**AUGUST 18:
MEDICATIONS DUE**

**AUGUST 24-29
CLEVELAND TRIP!**

KEEP IN MIND:

RADIOS, CD PLAYERS, TABLETS, ETC. ARE OFTEN MISPLACED OR LOST ON THE TRIPS. WE SUGGEST YOU DO NOT BRING THESE ITEMS UNLESS NECESSARY. SHARES IS NOT RESPONSIBLE FOR ANYTHING STOLEN OR MISSING.

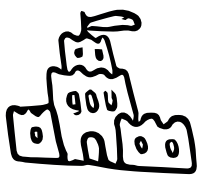
MEDICATIONS:

- MEDICATIONS MUST BE APPROPRIATELY LABELED WITH: MEDICATION NAME, INDIVIDUAL'S NAME, DOSAGE, AND TIME TO BE GIVEN.
- MEDICATION PASS PACKS ARE THE BEST OPTION- PLEASE CONTACT YOUR LOCAL PHARMACY TO HAVE YOUR MEDICATION PACKAGED THIS WAY.
- IF LOTIONS, MOUTHWASHES, NUTRITION DRINKS, ETC. CAN BE DEFERRED FOR THE WEEK- PLEASE DO NOT SEND THESE ITEMS AND DO NOT INCLUDE THEM ON THE EMERGENCY INFORMATION SHEET.

*NOTE: MEDICATIONS WILL BE KEPT AND MONITORED BY A STAFF MEMBER THROUGHOUT THE TRIP. THIS IS ONE AREA THAT IS MONITORED CLOSELY FOR EVERYONE.

C-PAP MACHINES:

- LABEL YOUR C-PAP MACHINE
- BRING A GALLON OF DISTILLED WATER FOR THE MACHINE AND LABEL IT.
- DIRECTIONS TO USE THE MACHINE (IF PARTICIPANT NEEDS ASSISTANCE)



Travel Tips



PLAN FOR SOUVENIRS:

SHOPPING OPPORTUNITIES WILL BE AVAILABLE. PLEASE MAKE A JUDGMENT AS TO YOUR INTEREST IN SOUVENIR SHOPPING AND SEND AN APPROPRIATE AMOUNT. PLEASE PROVIDE IDEAS FOR SHOPPING ON THE EMERGENCY INFORMATION SHEET.

PACK FOR THE WEATHER:

PACK WEATHER-APPROPRIATE CLOTHING.

CLEVELAND WEATHER RANGES FROM 65-80 DEGREES IN AUGUST



LABEL YOUR BELONGINGS:

MAKE SURE TO PUT A NAME TAG ON YOUR SUITCASE, C-PAP, WALKER, AND WHEELCHAIR. THIS IS REQUIRED.

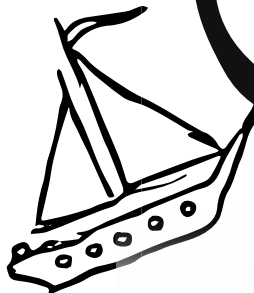
FYI

THERE IS NO SWIMMING POOL AT OUR HOTEL

Reminder
ONLY PACK 1 SUITCASE

ESSENTIAL ITEMS:

1. SUNSCREEN
2. CHARGING CORDS
3. CLOTHING FOR ACTIVITIES
4. PLENTY OF UNDERWEAR AND SOCKS
5. HYGIENE PRODUCTS: SHAMPOO, SOAP, TOOTHBRUSH, AND TOOTHPASTE



MEET THE NEW STAFF!



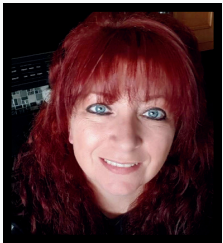
HI, I AM KAYLA AMBURGEY! I HAVE BEEN A PRODUCTION SUPERVISOR IN SHELBYVILLE FOR A YEAR AND A HALF. I AM 20 YEARS OLD. SOME OF MY FAVORITE THINGS ARE THE COLOR PINK AND PLAYING VIDEO GAMES.



HELLO, I AM DWANA BACK-LAMBERSON, DIRECTOR OF RESOURCE DEVELOPMENT! I LIVE IN GREENFIELD WITH MY HUSBAND AND THREE CATS. I HAVE WORKED PREVIOUSLY AS AN EMPLOYMENT SPECIALIST, VOCATIONAL ASSESSMENT COUNSELOR, PROGRAM MANAGER, AND GRANTS CONSULTANT. I HOLD A MASTER'S DEGREE IN COUNSELING PSYCHOLOGY, WITH A VOCATIONAL REHABILITATION FOCUS. WHILE I AM NEW TO THE ROLE OF FUNDRAISING AND DEVELOPMENT, I HAVE A LIFELONG PASSION FOR SUPPORTING OTHERS TO ACHIEVE THEIR FULL POTENTIAL, AND I AM EXCITED TO JOIN THE SHARES TEAM!



HI, MY NAME IS HEATHER BARNES! I WORK IN THE LIVING SKILLS DEPARTMENT IN SHELBYVILLE. I HAVE TWO KIDS WHO ARE 9 AND 13. SOME INTERESTING FACTS ABOUT ME ARE- I HAVE BEEN A VEGETARIAN FOR 25 YEARS, I LIKE TO READ, AND I LIKE GOING ON ROAD TRIPS.



HELLO, MY NAME IS KERRY BARNES! I AM A LIVING SKILLS INSTRUCTOR IN SHELBYVILLE. I AM ORIGINALLY FROM UPSTATE NEW YORK AND MOVED TO SHELBYVILLE IN 1997. MY HUSBAND AND I HAVE BEEN MARRIED FOR 16 YEARS. I HAVE TWO KIDS, KAT AND GRAYSON. I HAVE WORKED IN THE HEALTHCARE FIELD AS A QMA FOR 30 YEARS. I LOVE CARING FOR OTHERS AND AM EXCITED TO BE A PART OF THIS TEAM.



HI, MY NAME IS THOMAS BUMP! I'M EXCITED TO BE PART OF THE SHARES TEAM AND HAVE ALREADY STARTED GETTING TO KNOW THE PARTICIPANTS AND LEARNING THE ROPES. IN MY FREE TIME, I ENJOY READING, SPENDING TIME WITH MY WIFE, PATRICIA, AND OUR DOG, COCOA. WE ARE ORIGINALLY FROM WISCONSIN AND MOVED TO RUSHVILLE 29 YEARS AGO. WE'VE BEEN MARRIED FOR 30 YEARS, AND I HAVE FOUR WONDERFUL STEPCHILDREN. I HAVE A BACKGROUND IN MANUFACTURING AND WAS A FREIGHT DRIVER FOR MANY YEARS.



HI, I AM CARRIE CANTER! I HAVE BEEN WORKING AT SHELBYVILLE SHARES FOR A YEAR AS A PRODUCTION SUPERVISOR! I GRADUATED FROM SHELBYVILLE HIGH SCHOOL AND HAVE LIVED IN SHELBYVILLE FOR 20 YEARS. I AM MARRIED AND HAVE TWO WONDERFUL CHILDREN, AUSTIN AND AVERIE. IN MY FREE TIME, MY DAUGHTER AND I ENJOY WALKING THE DIFFERENT TRAILS IN SHELBYVILLE.

MEET THE NEW STAFF!



HEY EVERYONE! I'M LINDA, AND I'M EXCITED TO BE HERE AND START WORKING WITH OUR PARTICIPANTS TO HELP THEM REACH THEIR GOALS. I'M PASSIONATE ABOUT SUPPORTING OTHERS AND CAN'T WAIT TO GET TO KNOW THE TEAM. A FUN FACT ABOUT ME - I LOVE TO TRAVEL AND EXPLORE NEW PLACES.



HI, I AM AUSTIN EARLY! I STARTED AT SHARES AS AN EMPLOYMENT CONSULTANT IN SEPTEMBER OF 2024. I LIVE IN GREENFIELD WITH MY GIRLFRIEND AND 10-YEAR-OLD DAUGHTER, EMMA. WHEN NOT WORKING AT SHARES, I AM A WRESTLING COACH AT GREENFIELD-CENTRAL HIGH SCHOOL. I ENJOY PLAYING CHESS AND VOLUNTEERING WITHIN THE GREENFIELD COMMUNITY.



HELLO, MY NAME IS PHILLIP HATTON! I HAVE BEEN AT SHARES FOR SIX MONTHS AS THE BUS DRIVER IN SHELBYVILLE. I HAVE OVER 10 YEARS OF BUS DRIVING EXPERIENCE. I ENJOY SPENDING TIME WITH MY WIFE, SON, AND OUR TWO DOGS. I ALSO MAKE GREAT CHOCOLATE CHIP COOKIES!



HELLO, I AM SUSAN LINDGREN! I AM ENJOYING TEACHING CORE A & B AND MEDICATION ADMINISTRATION TO THE SHARES STAFF! I HAVE BEEN A REGISTERED NURSE FOR ALMOST 30 YEARS. THROUGHOUT MY NURSING CAREER, I HAVE BEEN A FLOOR NURSE, SUPERVISOR, AND TEACHER AT IVY TECH. MY HUSBAND AND I HAVE BEEN MARRIED FOR 43 YEARS. WE ENJOY GOING TO BASEBALL GAMES AND TRAVELING. I ENJOY SPENDING TIME WITH MY DAUGHTERS AND 14 GRANDCHILDREN. IN MY FREE TIME, YOU CAN ALWAYS FIND ME READING A BOOK!



HELLO, I AM DEREK MARSHALL! I AM A RETIRED PUBLIC EDUCATOR. LAST SEPTEMBER, I MOVED TO SHELBYVILLE TO BE CLOSER TO MY GRANDCHILDREN. I STARTED AT SHARES IN THE EMPLOYMENT DEPARTMENT IN OCTOBER. I TRULY LOVE AND ENJOY HELPING PEOPLE IDENTIFY THEIR PASSION AND FIND MEANINGFUL EMPLOYMENT.



GREETINGS, I AM LYNN PICKETT! I HAVE BEEN WITH SHARES SINCE APRIL. I COMPLETED MY UNDERGRAD WORK AT IU AND PURSUED MY DOCTORAL EDUCATION AT WVU; SO I'M BASICALLY A MOUNTAINEER HOOSIER. I HAVE WORKED 20+ YEARS IN MENTAL HEALTH AND IDD, I AM A QMHP AND QIDP TO WORK IN BOTH FIELDS. ON A PERSONAL NOTE: I HAVE CHILDREN, DOGS, CATS, AND, IN MY SPARE TIME, FARM 20 ACRES. I LOVE TO HIKE AND AM A DEDICATED READER. I'M ALWAYS WILLING TO ACCEPT DARK CHOCOLATE!

Stay Connected: Dates & Details

Upcoming Highlights

Shares, Inc. Board Meeting

Monday, July 14th at 7:00 pm,
*Shelbyville

Deadline for Trip Paid in Full

Friday, August 1st

Special Needs Trusts Workshop

Monday, August 4th 6:30pm,
Rushville

Shares, Inc. Educational Trip

Sunday, August 24- Friday, August 29

Shares, Inc. Board Meeting

Monday, September 29th at 7:00 pm,
*Greenfield

* Note: Locations of the board meetings could change.

Planning for dependents with special needs

You're invited to attend a workshop on:
"Special Needs Trusts"

Special Needs Trusts may provide supplemental resources for an individual with special needs. Under various circumstances, not having a special needs trust may adversely affect an individual's eligibility for government benefits.

This workshop will provide an overview of different types of trusts, important considerations in naming a trustee, expenses that can be paid through the trust, funding options, and how to get started in creating a properly drafted special needs trust.

Presented by: Gordon Holmes

Date: Monday, August 4th, 2025

Time: 6:30 PM-8:00 PM
Light meal provided with RSVP

Place: Shares Inc.
521 Conrad Harcourt Way Rushville

RSVP: bsnyder@sharesinc.org

The presentation will run approximately 30-45 minutes, with plenty of time afterwards to answer your questions.

© 2023 Massachusetts Mutual Life Insurance Company (MassMutual®), Springfield, MA 01111-0001. All rights reserved. www.MassMutual.com
SC1063 423 MM202604-305047



Connect With Us



www.facebook.com/shares-inc



www.sharesinc.org



[@shares_inc](https://www.instagram.com/shares_inc)

Let's Talk BENEFITS

SOCIAL SECURITY BENEFITS **MEDICAID AND MEDICARE** **HOUSING AND MORE**

Learn How Early & Ongoing Benefits Counseling Empowers Those Considering Work

Register Today

Dec. 9, 2024	3:00- 5:00 p.m. ET	go.iu.edu/8rfV	
Jan. 15, 2025	11:30 - 1:30 p.m. ET	go.iu.edu/8rfW	
April 25, 2025	8:30 - 10:30 a.m. ET	go.iu.edu/8rfY	
June 16, 2025	3:00- 5:00 p.m. ET	go.iu.edu/8rfZ	
Oct. 29, 2025	11:30 - 1:30 p.m. ET	go.iu.edu/8rg0	

INDIANA INSTITUTE ON DISABILITY AND COMMUNITY CENTER ON COMMUNITY LIVING AND CAREERS

The materials of this flyer were developed under grant number H90200000 from the Department of Education. However, the materials do not necessarily represent the policy of the Department of Education, and you should not assume endorsement by the Federal Government. (Authority: 34 USC 10106 and 34 USC 10106)